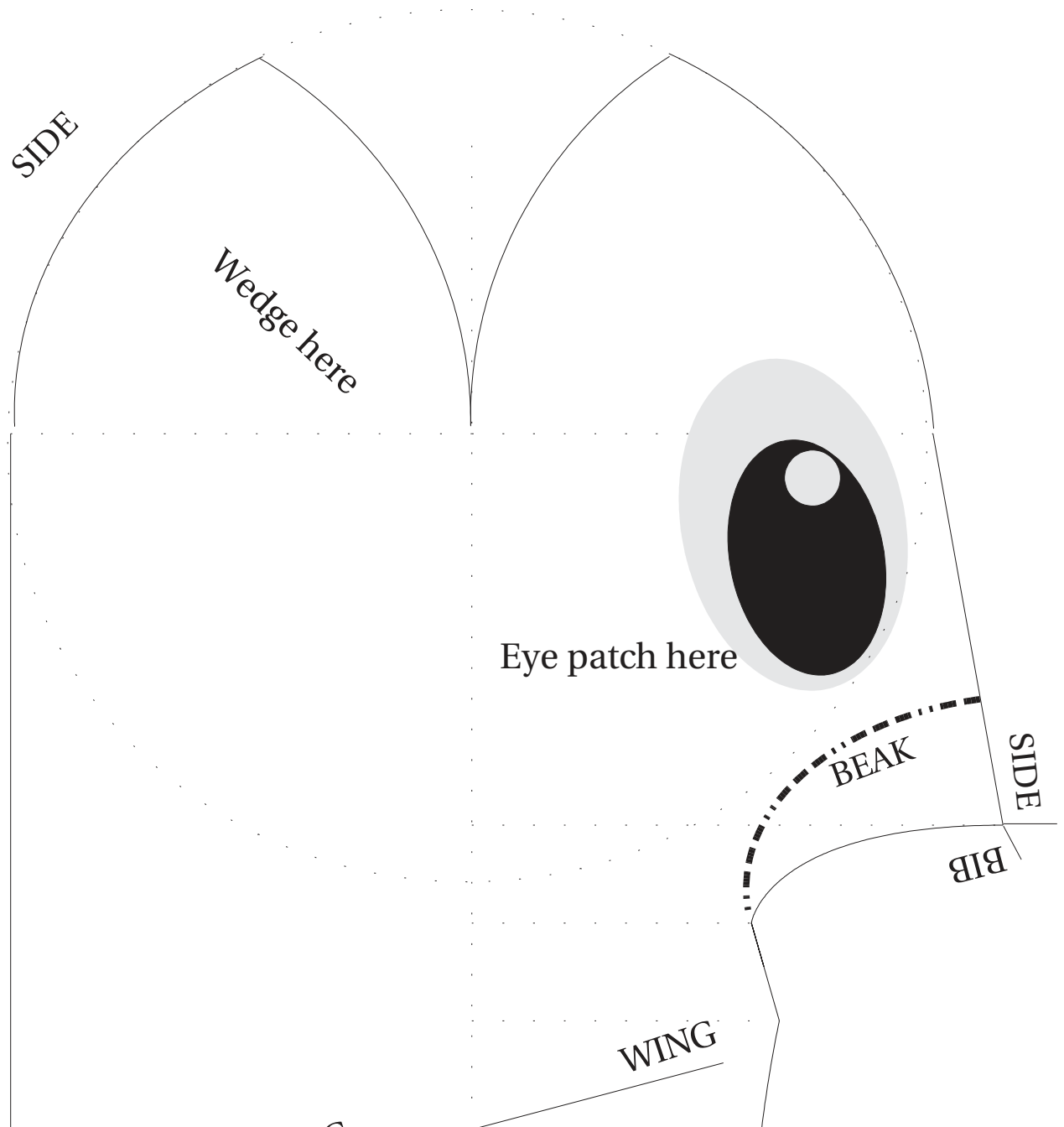
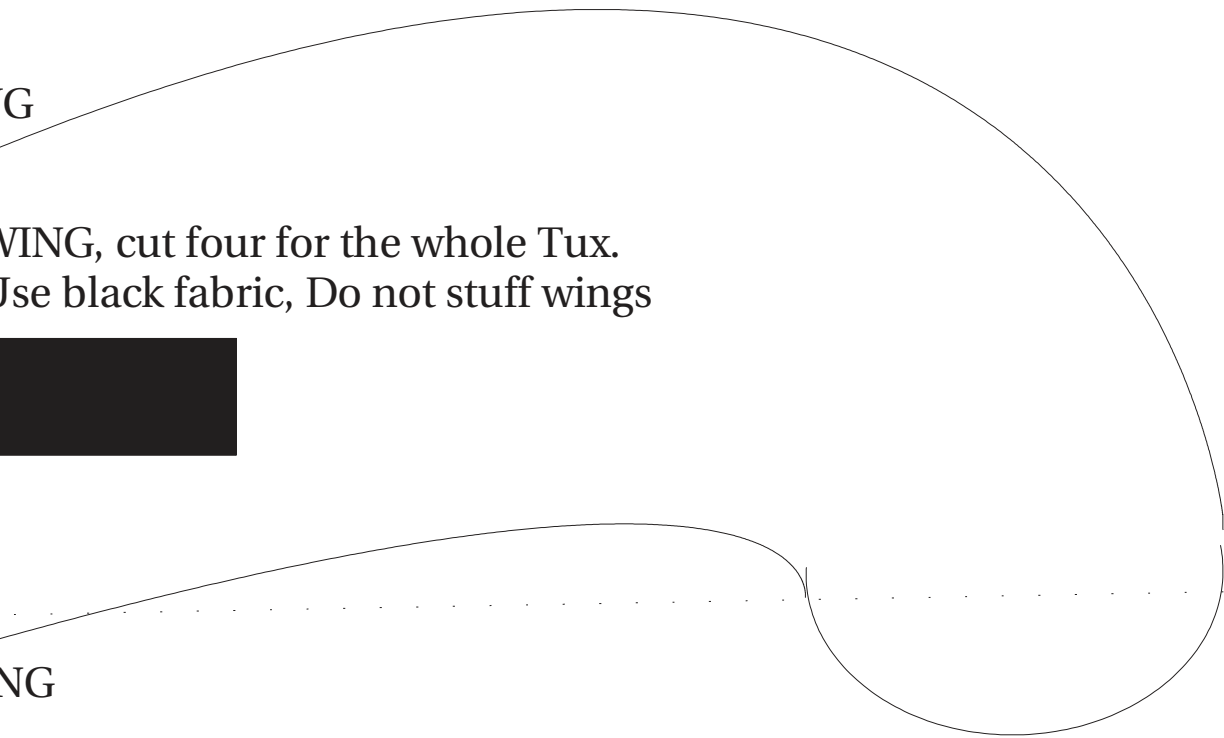


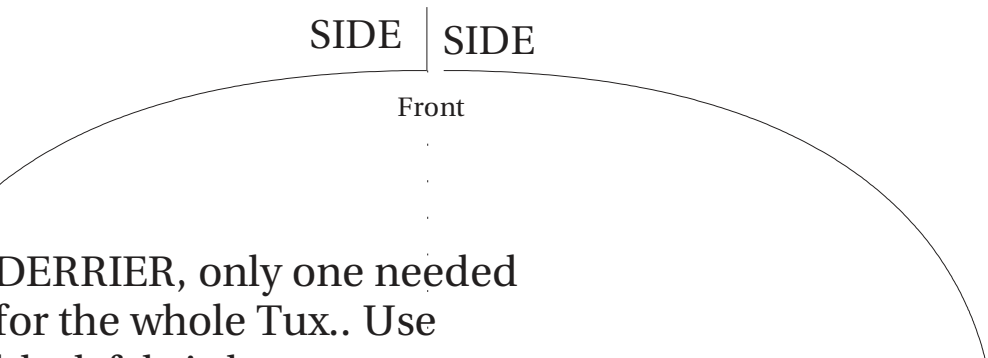
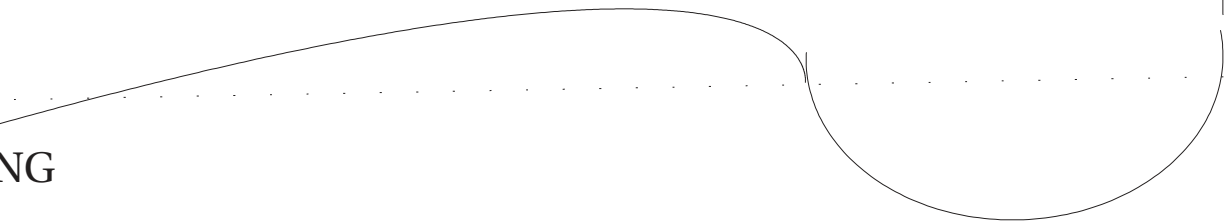
0 cm

10 cm





WING, cut four for the whole Tux.
Use black fabric, Do not stuff wings



SIDE | SIDE

Front

DERRIER, only one needed
for the whole Tux.. Use

Tux Patter

<http://www>
<mailto:jo>

The whole Tux is vertically symetric. So here
You learn how to make one half. The other ha
is just the mirror of this one here.
There are loads of tricks to sew this one prop
why some pictures are attached here.

To implement the eyes it would be best to use
stiched patches and just attach them.

TODOS: Further development of the feet, they
in development status, they have to be impro

ern Version 0.6, 04. May. 2005

www.free-penguin.org

berg.feuerhake@free-penguin.org

Changelog:

- enhancements in curvature of the head
- further enhancements of head and behinds
- put some cm- and inch-rulers to it, to give sewers an idea of the original size
- improved beak form
- color marks are put within the patches
- WhichPartGoesWithWhich Documentation

If

erly thats

e painted or

y are now

ved



20 cm

30 cm

WING

BIB



Foot goes here

Wedge here

The **SIDE** part, you need two of them for the whole tux
Use black fabric

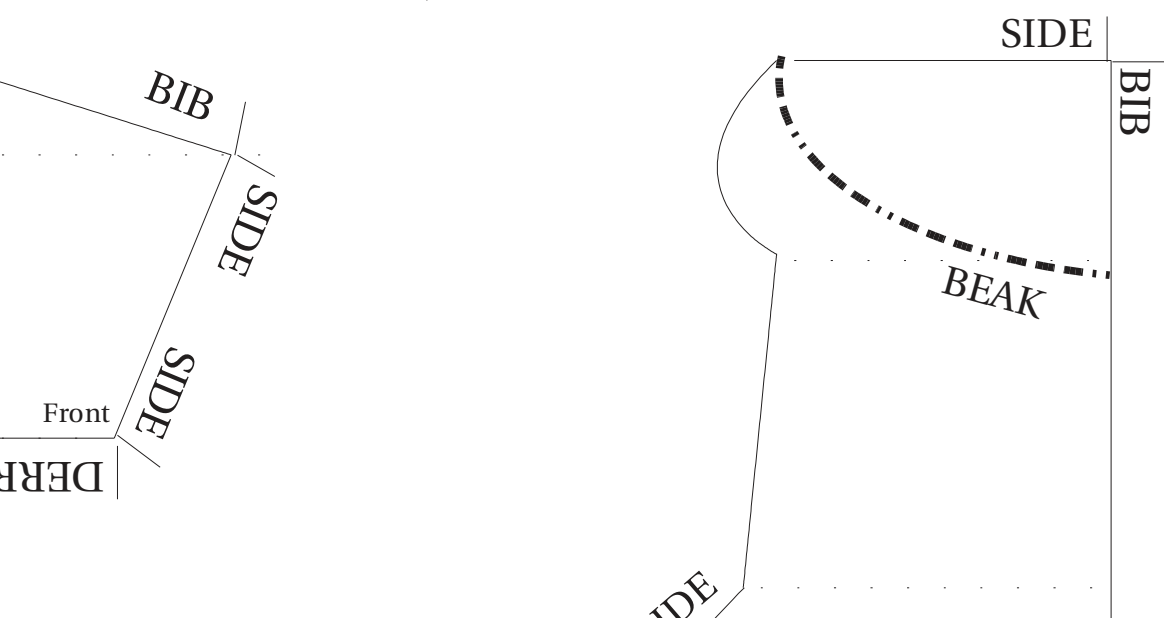
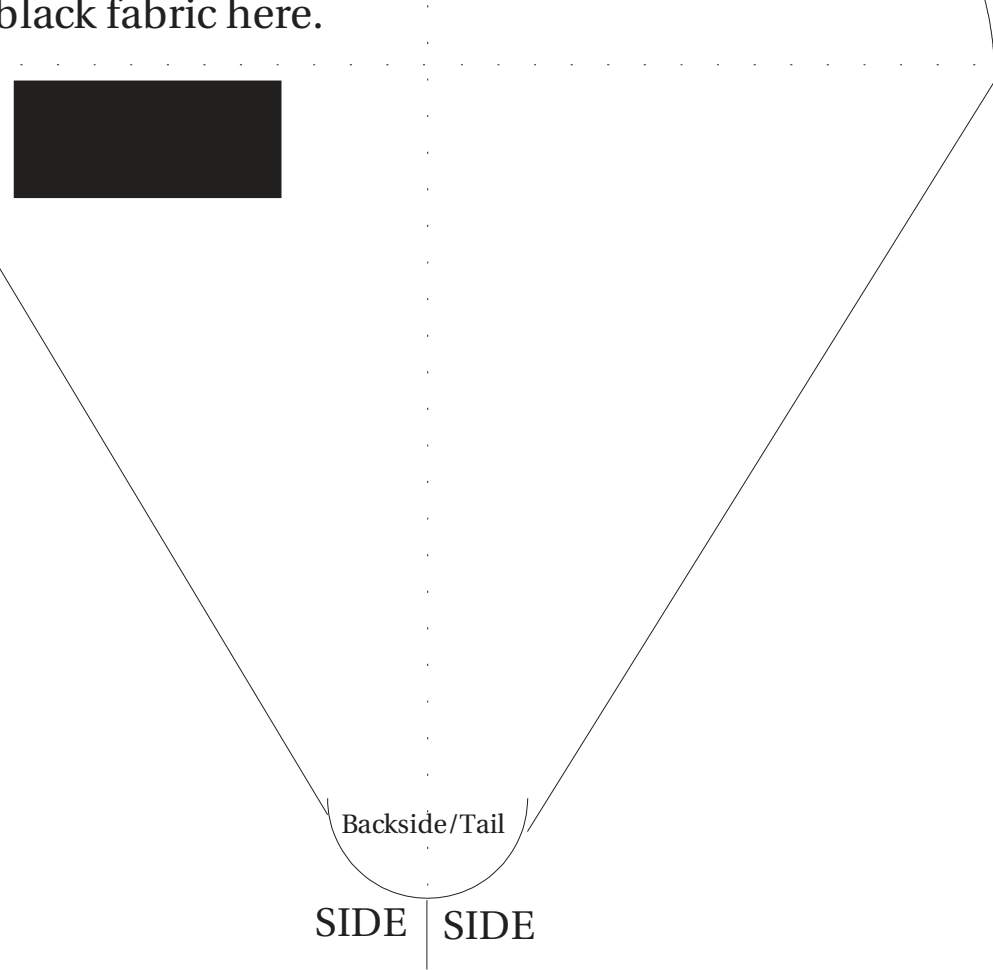
SIDE

Backside/Tail

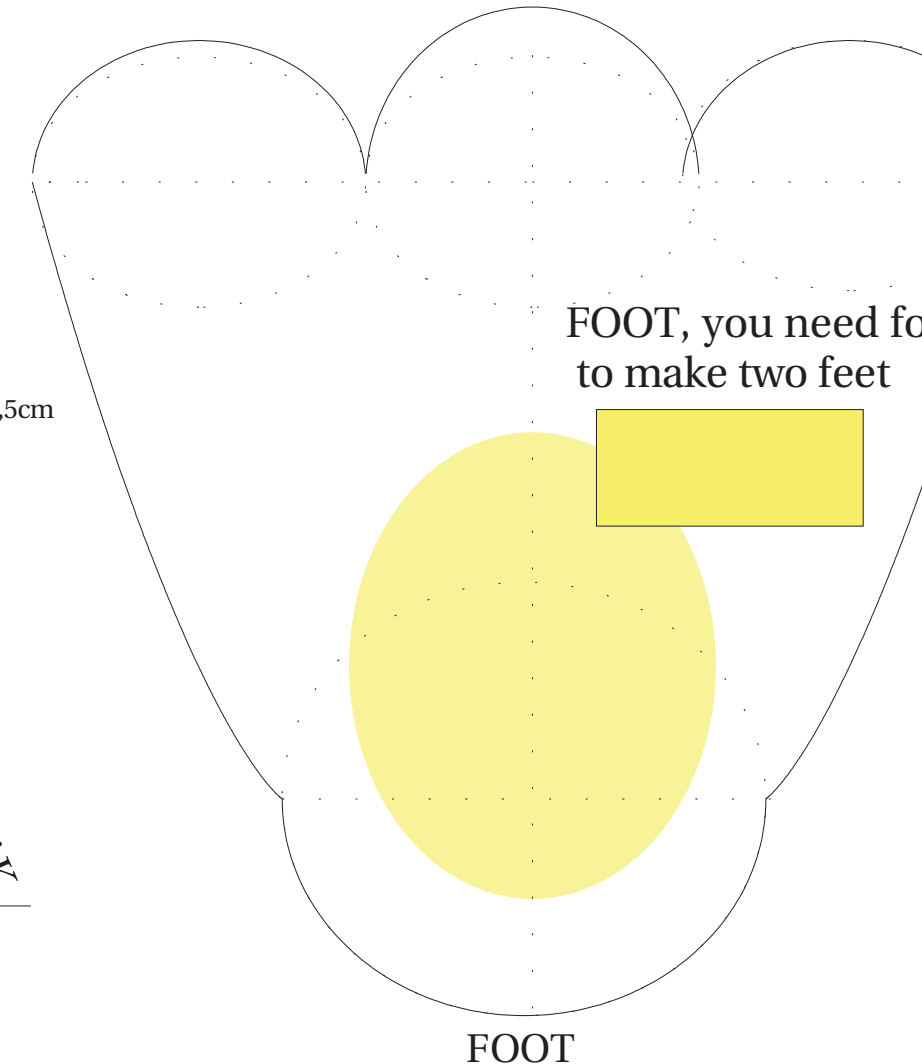
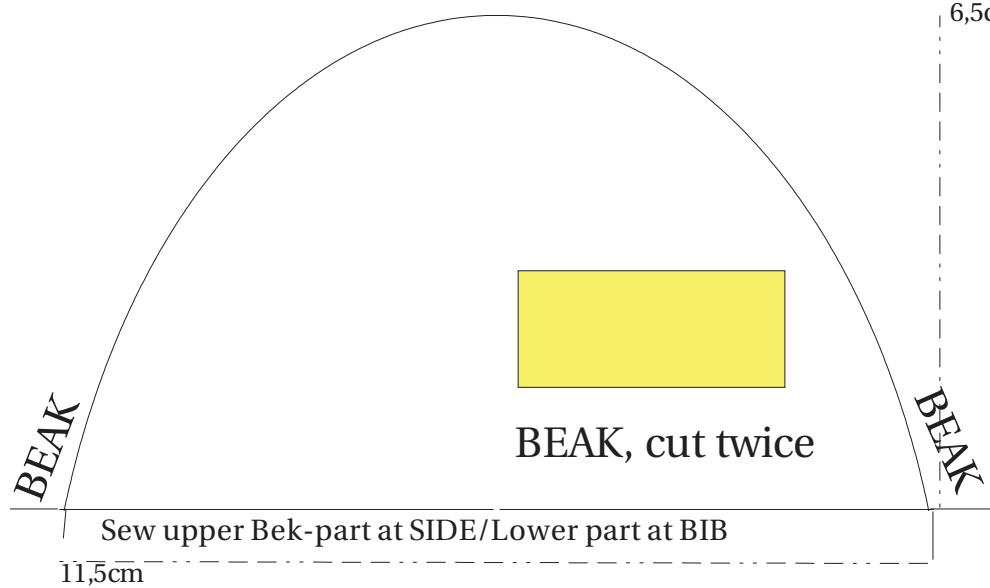
DERRIER

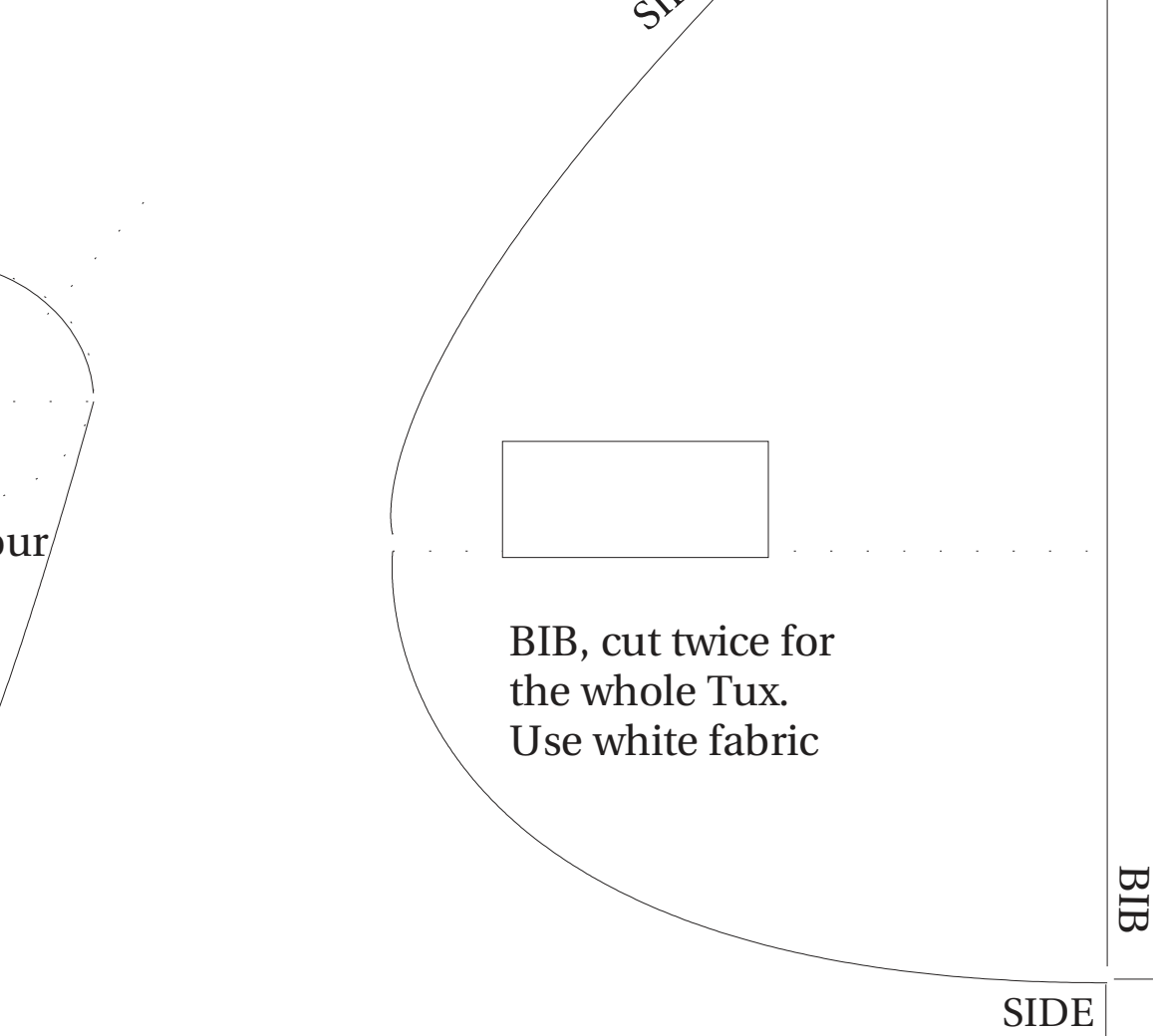
RIER

black fabric here.









License: This pattern



ns are released under GPL